

# ZwCAD Licensing Guide

## Contents

<b>Stand-alone license .....</b>	<b>2</b>
Overview.....	2
Step 1 - Install ZwCAD 2006 .....	2
Step 2 - Install ZwCAD Dongle .....	2
Step 3 - Register ZwCAD 2006.....	3
Updated from ZwCAD 2005 .....	4
<b>Network license .....</b>	<b>6</b>
Overview:.....	6
System requirements:.....	6
Step 1 - Install ZwCAD License Server .....	7
Step 2 - Install Network Dongle .....	7
Step 3 – Register and start License Server .....	7
Step 4 - Install ZwCAD 2006 .....	10
Step 5 - Register ZwCAD 2006.....	10
Updated from ZwCAD 2005 .....	12
<b>Advanced settings .....</b>	<b>14</b>
Shows the status of licenses assign.....	14
Callback a license by the strong arm .....	14
Specify a certain IP range for assigning the licenses.....	15
See the Log file .....	16
Using a License File instead of Dongle.....	16

# Stand-alone license

## Overview

An individual stand-alone license entitles the purchaser to run a ZwCAD product on a single workstation. You must install a dongle into your computer.

### Step 1 - Install ZwCAD 2006

1. Double click the installation file in the CD, Standard Edition or Professional Edition.
2. On the ZwCAD 2006 setup page, click **Next**.
3. On the License Agreement page, read the license agreement and click **I Agree**. If you do not agree to the terms of the license, click **Cancel** to cancel the installation.
4. On the License type page, specify **Individual stand-alone license**, and then click **Next**.
5. On the Choose Install Location page, either accept the default folder or click **Browse** to specify a different location. If you enter a path that does not exist, a new folder is created using the name and location you provide. Click **Install**.
6. Click **Finish**.

### Step 2 - Install ZwCAD Dongle

1. ZwCAD individual stand-alone license control their appearance show as below.

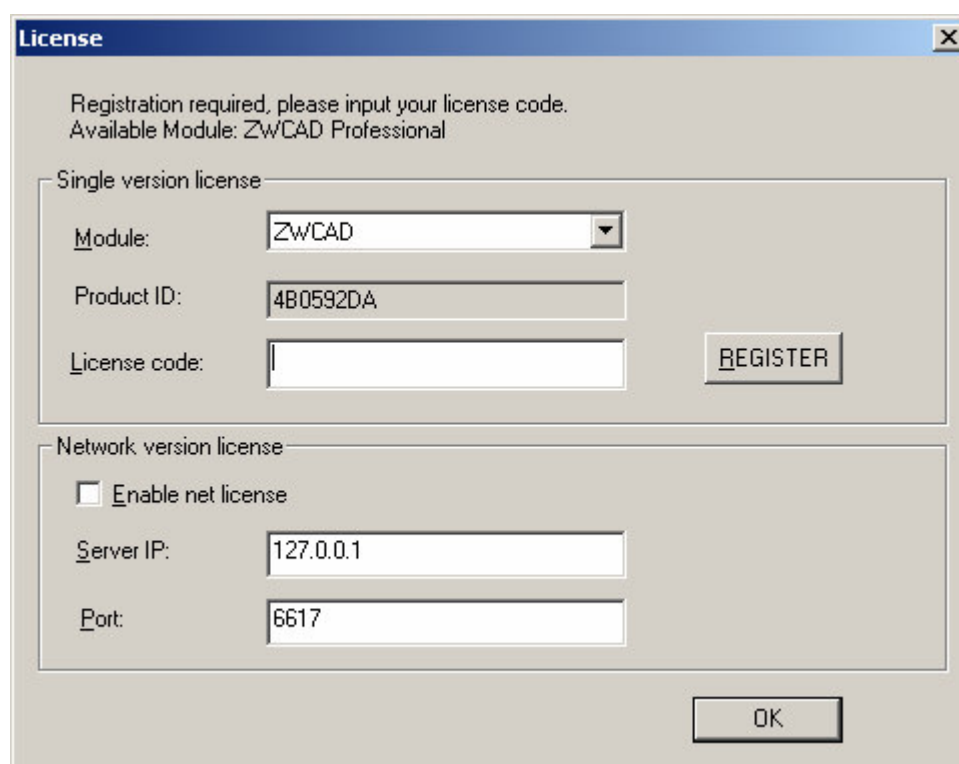
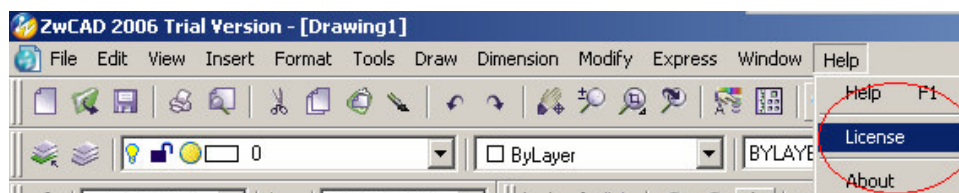


2. Plug your dongle into your computer.

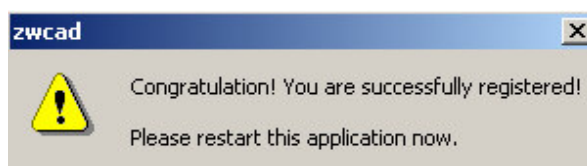


### Step 3 - Register ZwCAD 2006

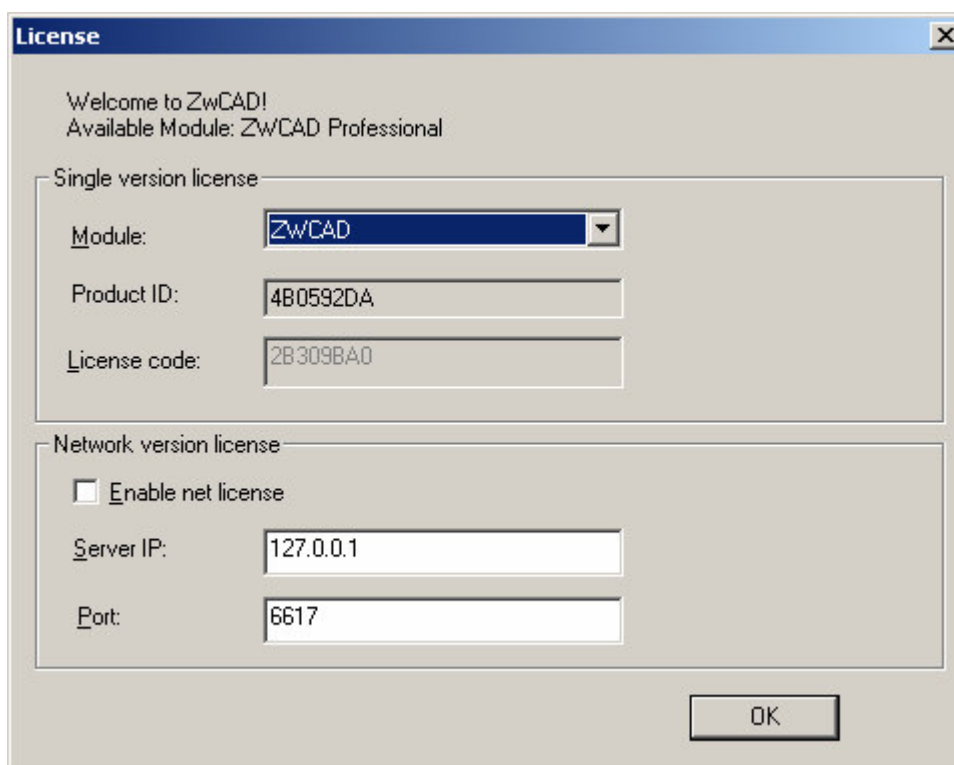
1. On the start menu (Windows), click All Programs (or Programs) → ZwCAD 2006 Professional (or Standard) → ZwCAD 2006 Professional (or Standard), or double click the ZwCAD 2006 shortcut on the desktop.
2. On the ZwCAD menu, choose **Help** → **License**, you can see the License Dialog box show as below.



3. Enter your **license code** and then click **REGISTER**. If your ZwCAD has been successfully registered, you can see this screen as below.



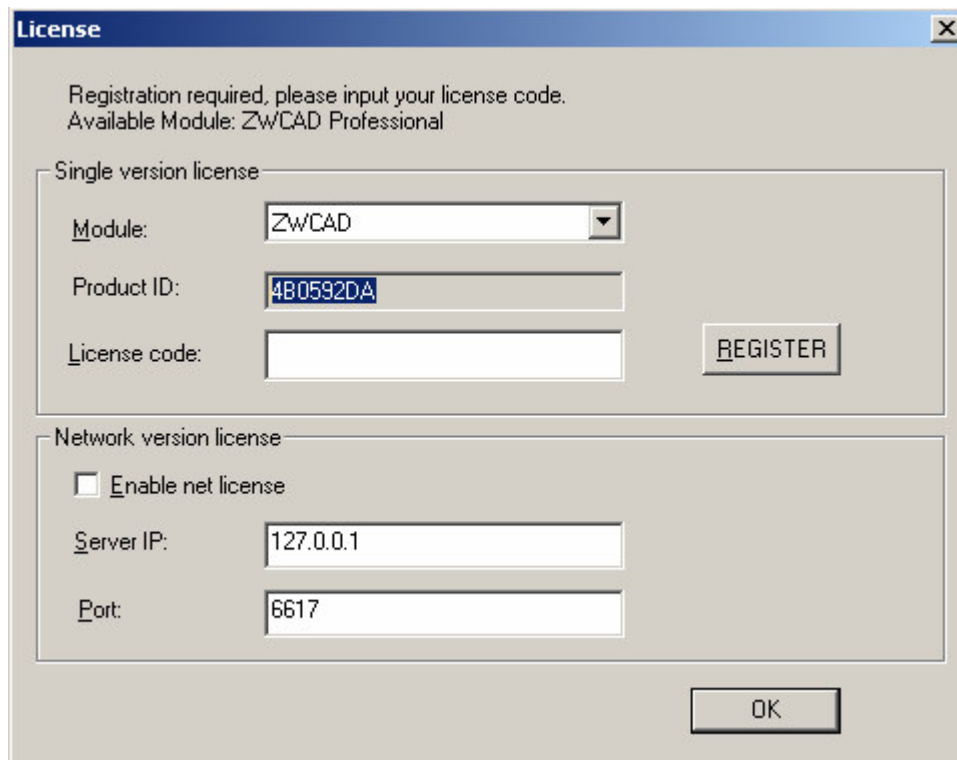
4. After restarting ZwCAD, you can find the information in the Help->License like as below



## Updated from ZwCAD 2005

If you have purchased ZwCAD 2005 and want to update to ZwCAD 2006, please follow these steps below. ZwCAD 2006 and ZwCAD 2005 can use a same Dongle, but needs different License Code.

1. Install ZwCAD 2006, on the License type page, specify **Individual stand-alone license**. (You can keep ZwCAD 2005 on your system or uninstall it)
2. Start ZwCAD 2006, then on the ZwCAD menu, choose **Help → License**, you can see the License Dialog box show as below. Copy the Product ID, and send it with your Dongle ID to your local dealer for a new License Code.



The image shows a 'License' dialog box with a blue title bar and a close button. The main text reads: 'Registration required, please input your license code. Available Module: ZwCAD Professional'. Below this, there are two sections: 'Single version license' and 'Network version license'. The 'Single version license' section contains a dropdown menu for 'Module' (set to 'ZwCAD'), a text field for 'Product ID' (containing '4B0592DA'), and an empty text field for 'License code'. A 'REGISTER' button is located to the right of the 'License code' field. The 'Network version license' section has a checkbox for 'Enable net license' which is unchecked, and text fields for 'Server IP' (containing '127.0.0.1') and 'Port' (containing '6617'). An 'OK' button is located at the bottom right of the dialog box.

License

Registration required, please input your license code.  
Available Module: ZwCAD Professional

Single version license

Module: ZwCAD

Product ID: 4B0592DA

License code: REGISTER

Network version license

Enable net license

Server IP: 127.0.0.1

Port: 6617

OK

3. Enter your **license code** and then click **REGISTER**.

# Network license

## Overview:

When a user starts ZwCAD 2006, ZwCAD 2006 determines the server from which it should try to obtain a license. ZwCAD 2006 then requests a license through the TCP/IP network protocol to the license server.

If the number of available licenses has not been exceeded on the license server, the Network License Manager assigns a license to the workstation. A ZwCAD session then starts on the workstation, and the number of available licenses on the license server is reduced by one.

Likewise, when a user exits ZwCAD 2006, the Network License Manager frees a license for another user. If a user runs multiple sessions of ZwCAD 2006 on an individual workstation, only one license is used. When the last session is closed, the license is freed.

## System requirements:

Make sure that your network license server meets the minimum recommended requirements. See the following hardware and software requirements.

1. Operating system, **Windows NT/2000/xp/2003 server**
2. Computer/processor, Pentium II or later 300 Mhz (minimum)
3. Network interface card
4. Communication protocol, TCP/IP

# Server setup

## Step 1 - Install ZwCAD License Server

You can install ZwCAD License Server on any computer of the network, but we recommend you install on the Server, this program supports Microsoft Windows 98/ME/NT/2000 /XP/2003 Server.

1. Double click **Network\_License\_Eng.exe**, in the **Network license** folder of the CD.
2. On the ZwCAD Network License Server Setup page, click **Next**.
3. On the Choose Install Location page, either accept the default folder or click **Browse** to specify a different location. If you enter a path that does not exist, a new folder is created using the name and location you provide. Click **Install**.
4. Click **Finish**.

## Step 2 - Install Network Dongle

To start ZwCAD Network License Server, you must install ZwCAD Network Dongle first.

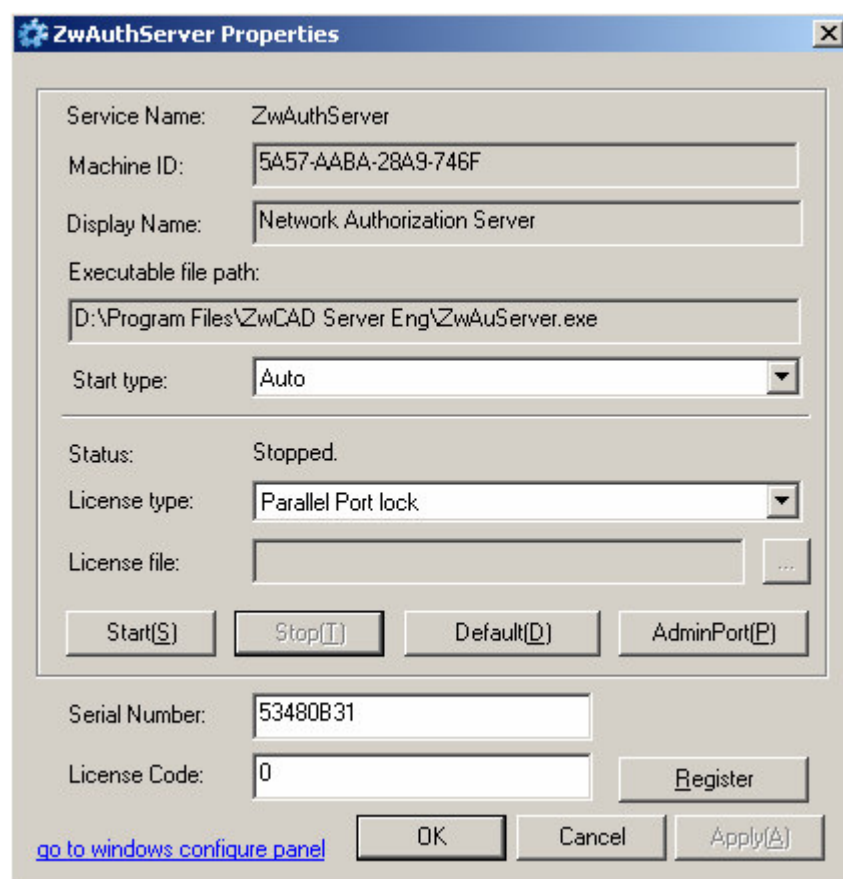
1. ZwCAD has two types of dongles, their appearance show as below.



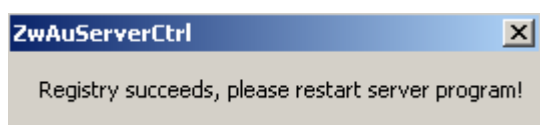
2. Plug it into your computer, which has been installed ZwCAD Network License Server.

## Step 3 – Register and start License Server

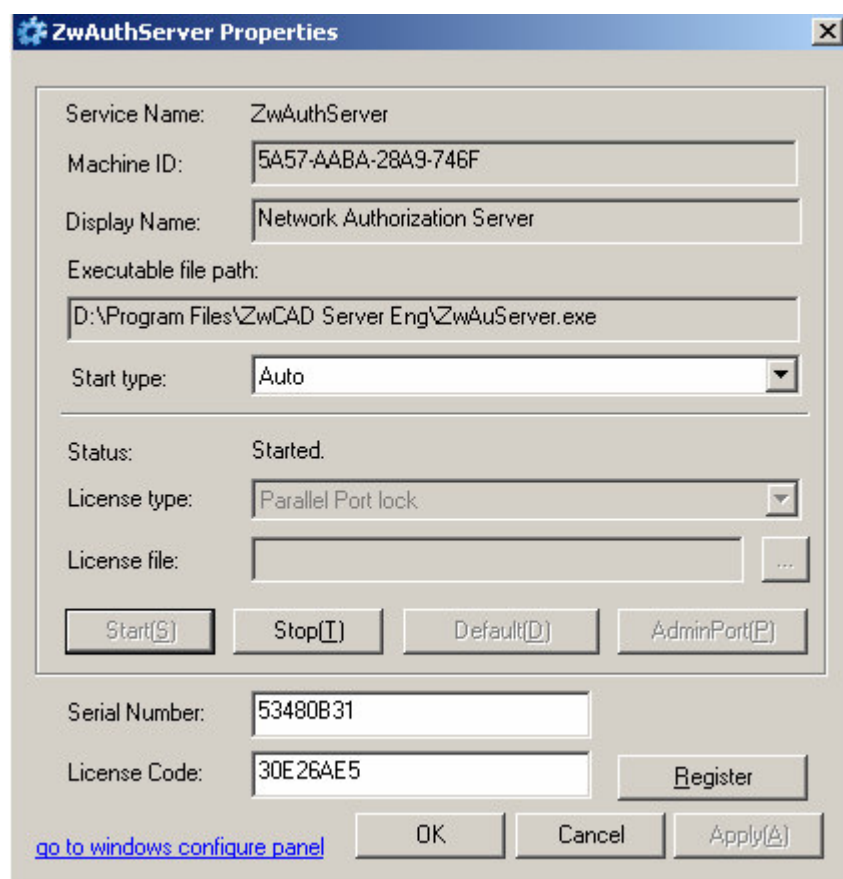
1. On the start menu (Windows), click All Programs (or Programs) → ZwCAD Network License Server → Console.



2. In the Start type box, Select **Auto**, then the License Server will automatically start after Windows logon. Default is **Auto**.
3. In the License type field, select the dongle type you are using, Parallel Port Dongle or USB Dongle. The **License file** item is for user who does not use Dongle, Go to **Advance setting** chapter to see detail.
4. Enter your license code into the License Code blank, then press Register button, program will prompt you to restart this Console, click OK and close the Console dialog box.



5. On the start menu (Windows), click All Programs (or Programs) → ZwCAD Network License Server → Console. Click Start button to start ZwCAD License Server.



### AdminPort:

ZwCAD License Server Settings will connect to the server through this AdminPort . The default port number is 56617. You can change it to another port number or click the **Default** button to reset.

**Go to Windows configure panel:** Click here to open the windows services console.

# *Client setup*

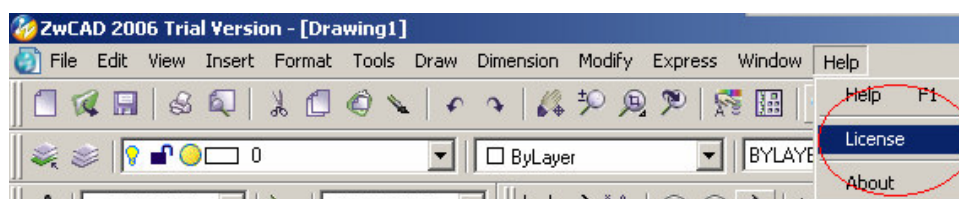
## Step 4 - Install ZwCAD 2006

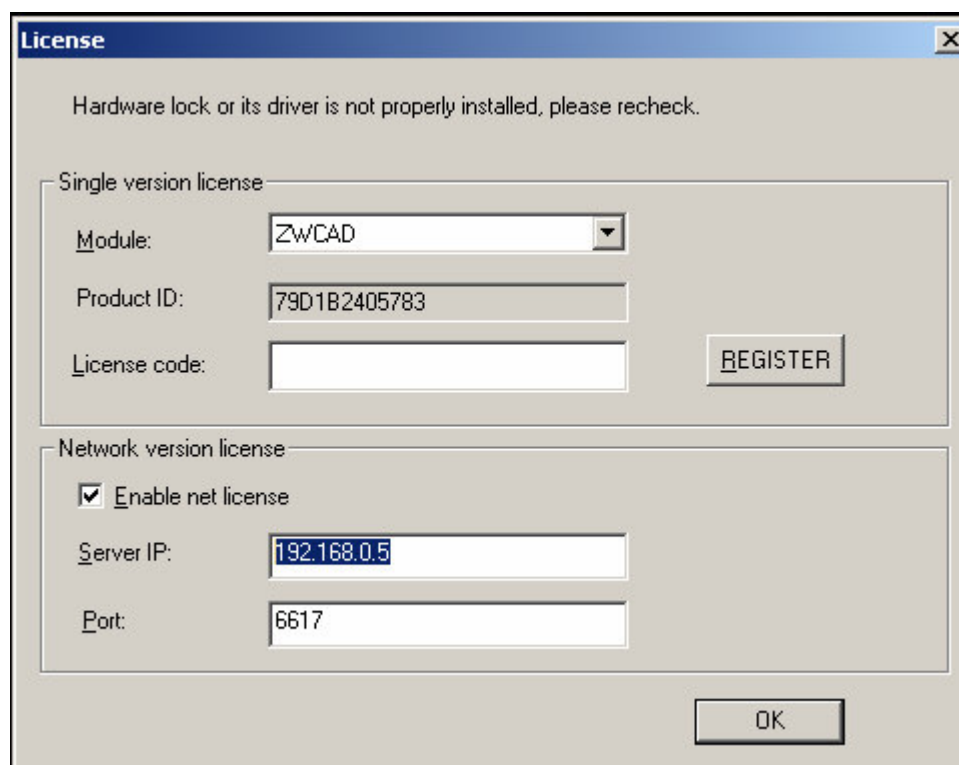
Double click the installation file in the CD, Standard Edition or Professional Edition.

1. On the ZwCAD 2006 setup page, click **Next**.
2. On the License Agreement page, read the license agreement and click **I Agree**. If you do not agree to the terms of the license, click **Cancel** to cancel the installation.
3. On the License type page, specify **Network floating license**, and then click **Next**.
4. On the Choose Install Location page, either accept the default folder or click **Browse** to specify a different location. If you enter a path that does not exist, a new folder is created using the name and location you provide. Click **Install**.
5. Click **Finish**.

## Step 5 - Register ZwCAD 2006

1. On the start menu (Windows), click All Programs (or Programs) → ZwCAD 2006 Professional (or Standard) → ZwCAD 2006 Professional (or Standard), or double click the ZwCAD 2006 shortcut on the desktop.
2. On the ZwCAD menu, choose **Help** → **License**, you can see the License Dialog box show as below, specify the Server IP address.

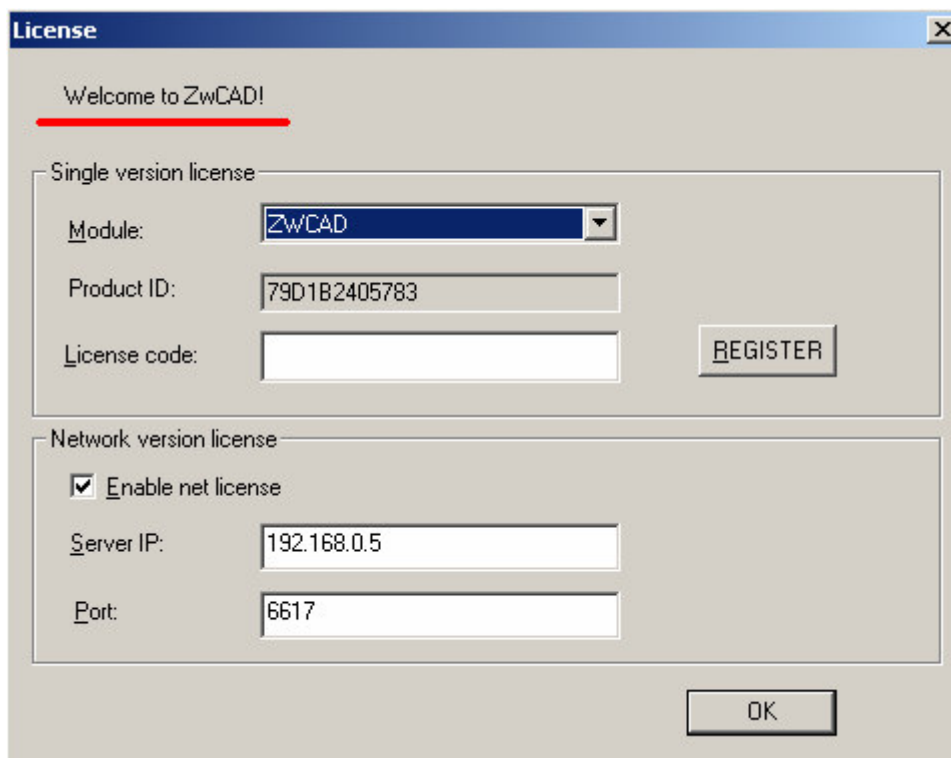
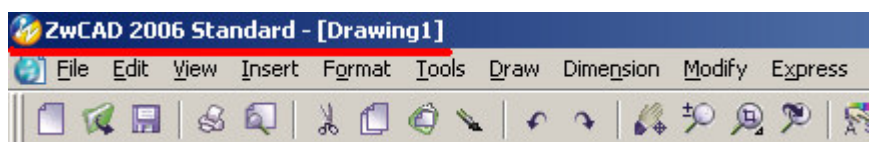




ZwCAD 2006 will automatically search the License Server in a LAN, but we recommend that specify the Server IP address manually. The server is the computer which you have installed ZwCAD License Server init. The IP address can be a LAN IP or a WAN IP.

**Note:** If your server has more than one network adapter, select the one that that corresponds to a physical network adapter. To determine which adapters are physical, type **ipconfig /all** at a Windows command prompt and view the Description field above each physical address. If there is more than one physical network adapter, you can use any one of them, as long as it was listed when you ran **ipconfig /all**. Logical devices such as VPN adapters, PPP adapters, and modems may be listed but are not usable for licensing.

3. Click OK and then restart ZwCAD 2006. You will see the ZwCAD title show as **ZwCAD 2006**, and the License Dialog box show as **Welcome to ZwCAD!**.



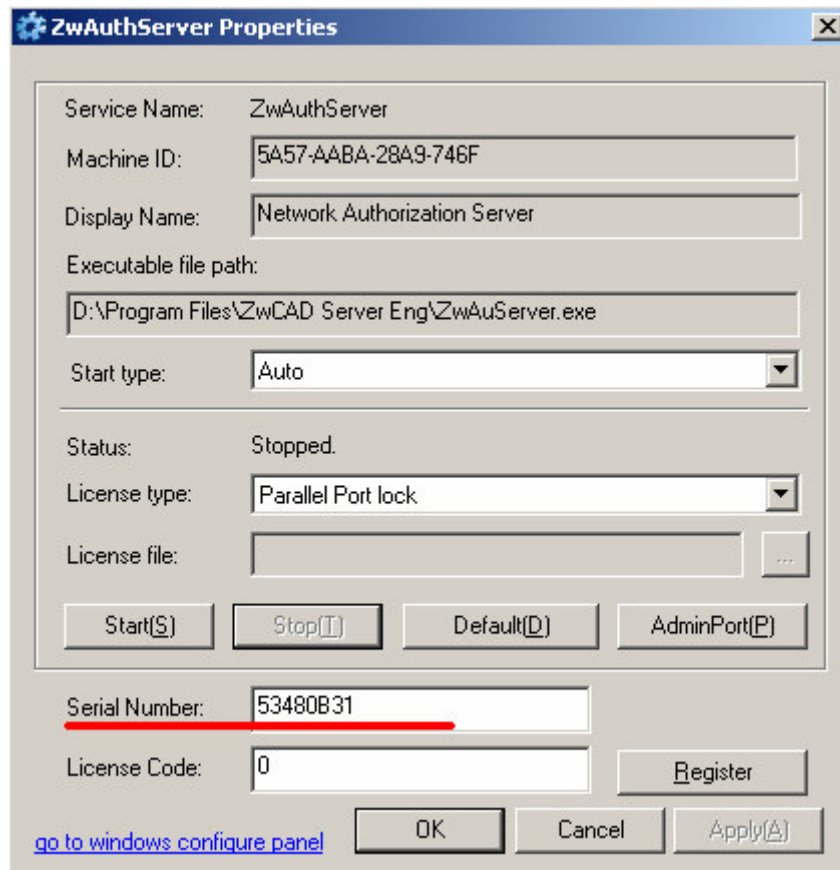
## Updated from ZwCAD 2005

If you have purchased ZwCAD 2005 and want to update to ZwCAD 2006, please follow these steps below.

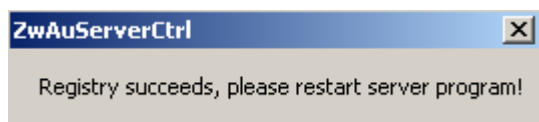
### *Server setup*

1. ZwCAD 2006 using a new Network License Server program, so you must uninstall the old version firstly and then install the new version. **NOTE:** To uninstall the Network License Server, please stop the License Server first. On the start menu (Windows), click All Programs (or Programs) → ZwCAD Network License Server → Console. Click Stop button to stop ZwCAD License Server.
2. On the start menu (Windows), click All Programs (or Programs) → ZwCAD Network License Server → Console. Copy the Serial Number, and send it with your Dongle ID to your local

dealer for a new License Code.



3. Enter your license code into the License Code blank, then press Register button, program will prompt you to restart this Console, click OK and close the Console dialog box.



4. On the start menu (Windows), click All Programs (or Programs) → ZwCAD Network License Server → Console. Click Start button to start ZwCAD License Server.

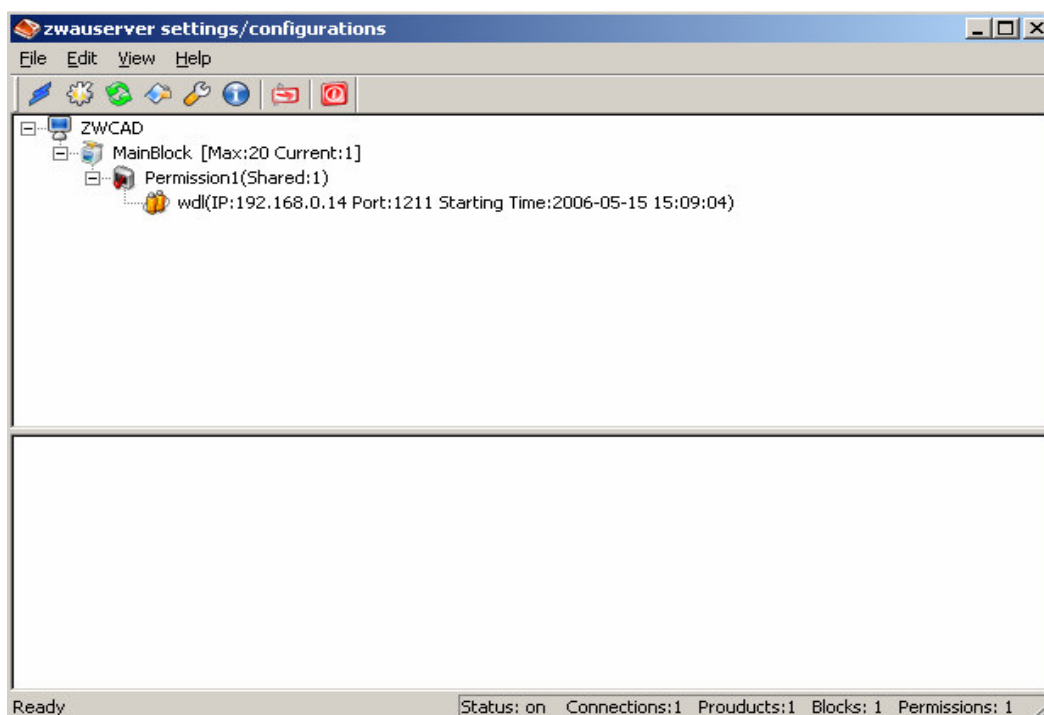
### ***Client setup***

See Page 10, 11

# Advanced settings

To configure the License Server with advance settings, please start the Configuration Dialog box.

On the start menu (Windows), click All Programs (or Programs) → ZwCAD Network License Server → Settings. Show as below:



## Shows the status of licenses assign

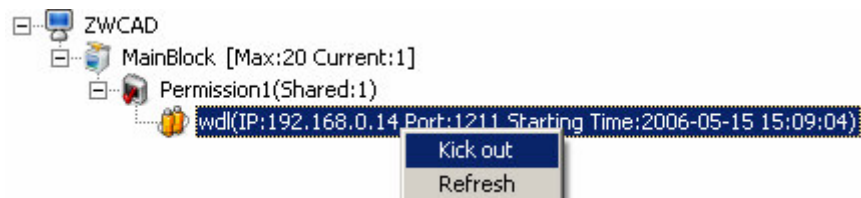
In the main window, you can see the status of license assigned. For example, the license pool has 10 licenses, 3 licenses have been assigned currently. It shows the basic information of the workstation which is running ZwCAD 2006, computer name, IP address, communicate Ports and when ZwCAD 2006 started.

## Callback a license by the strong arm

If you want to callback a license by the strong arm, firstly lock the server, then kick-out the license user. On the Edit menu, choose **Lock server**, or click the **Lock server** icon on the toolbar.



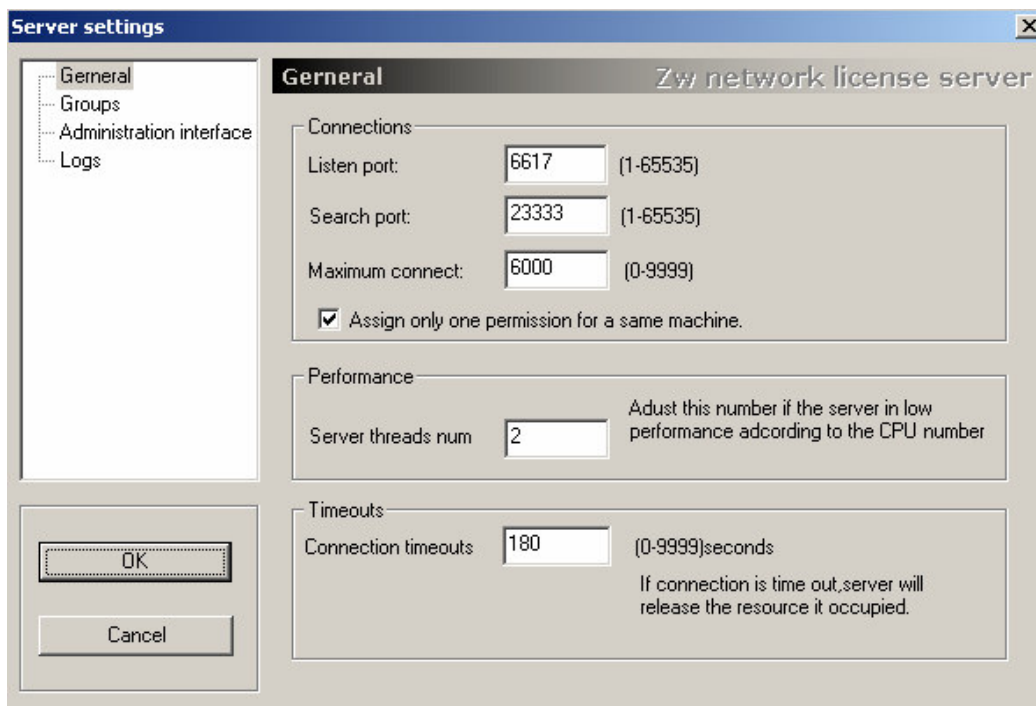
In the main window, right-click the license user, then click “Kick out”.



## Specify a certain IP range for assigning the licenses

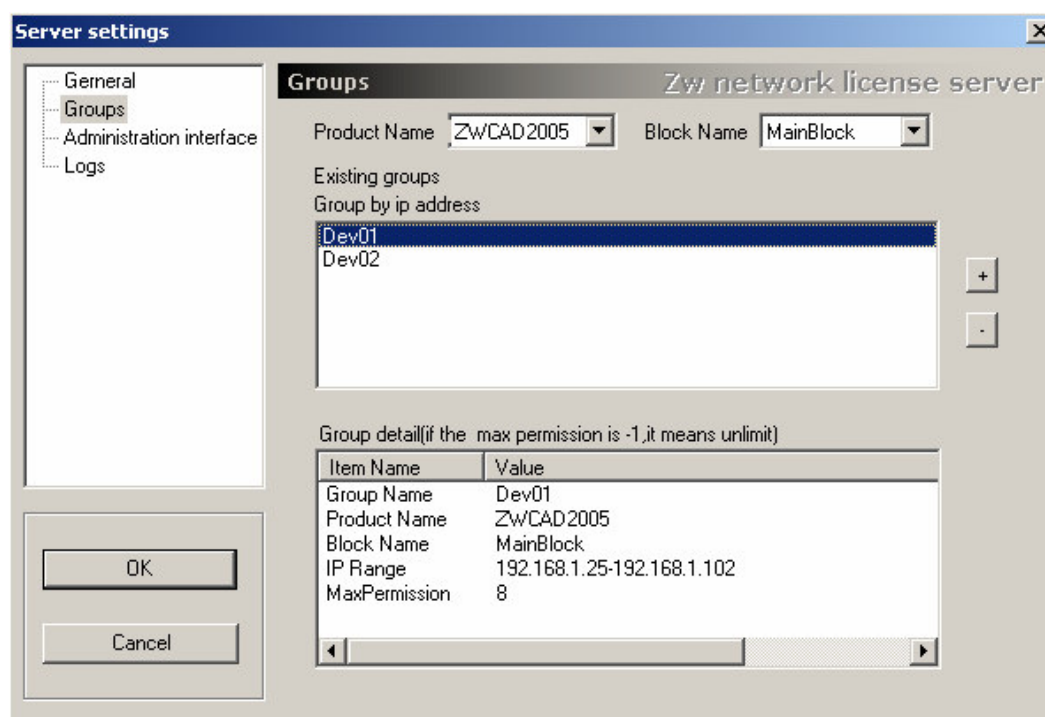
ZwCAD License Server can identify the IP address which has been allowed to obtain license and not allowed. To specify a certain IP range, follow these steps:

1. On the Edit menu, choose Settings. On the Settings Dialog box, click Groups.



## ZwCAD Licensing Guide

2. On the Groups page, press “+” to add a group or press “-” to remove a group. When a group is created, you can specify the group name, the IP range and the permission number. An example is show as below:



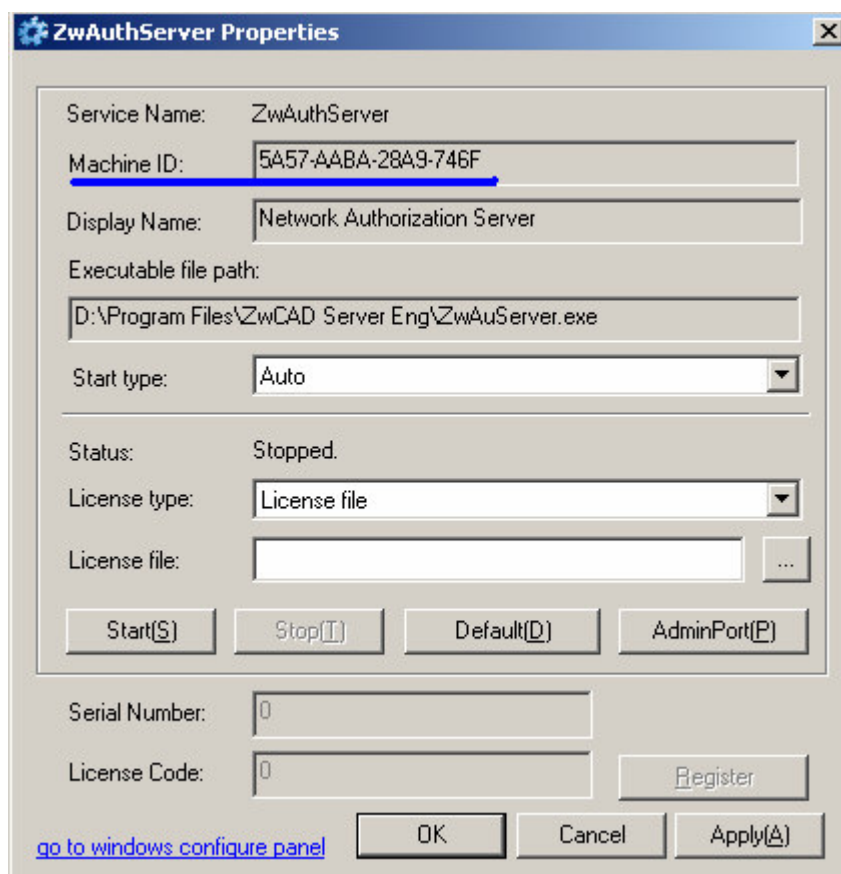
## See the Log file

Go to the ZwCAD License Server installation dir to see the log file.

## Using a License File instead of Dongle

To start the ZwCAD License Server, you must install a Dongle, if your computer can not plug a Dongle, you can use a **License File** instead. To get a License File, please follow the steps below.

1. On the start menu (Windows), click All Programs (or Programs) → ZwCAD Network License Server → Console.



2. Send the Machine ID to your local dealer to get a **License File**.
3. In the License type field, select **License file**.
4. Click Browse button to specify the location of your **License File**.
5. Click Start button to start ZwCAD License Server.

---

ZwCAD technical support, [tech@zwcad.com](mailto:tech@zwcad.com)  
Guangzhou Chinaweal Longteng Technology Co., Ltd.  
Add: Rm.508, No.886, TianHe North Road, Guangzhou 510635, China.  
Ph: (86)20-38289780 Fax: (86)20-38288676  
<http://www.zwcad.com> <http://www.zwcad.net> <http://www.zwcad.org>